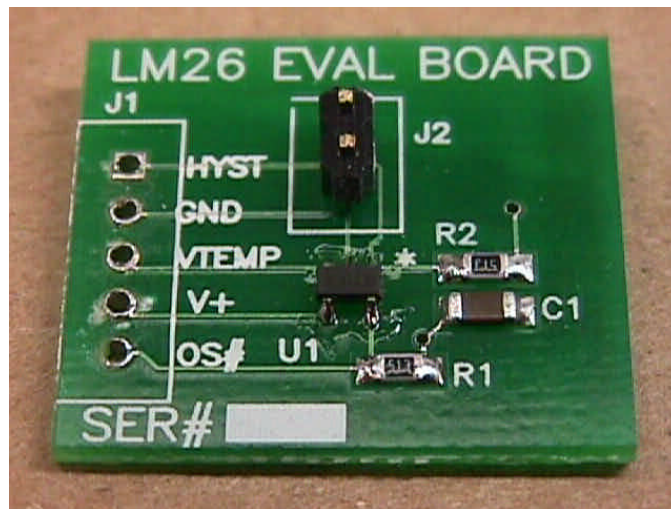


LM26 Evaluation Kit Manual

1.0 General Description

The LM26 Evaluation Kit allows quick connection and evaluation of the LM26CIM5-XPA factory preset thermostat. The LM26CIM5-XPA has a trip point setting of $+105^{\circ}\text{C}$ with an accuracy of $\pm 3^{\circ}\text{C}$. Header J2 allows you to short the HYST pin of the LM26 to GND thus changing the hysteresis to 10°C . The board comes without the jumper so the HYST pin is HIGH and the part 2°C hysteresis set. The part requires a power supply voltage of 2.7V to 5.5V. J1 allows easy connection of other circuitry to all of the LM26's pins.

Figure 1. LM26 Evaluation Board



2.0 Schematic Diagram

